

1.

How to Make Focaccia (Italian Bread)

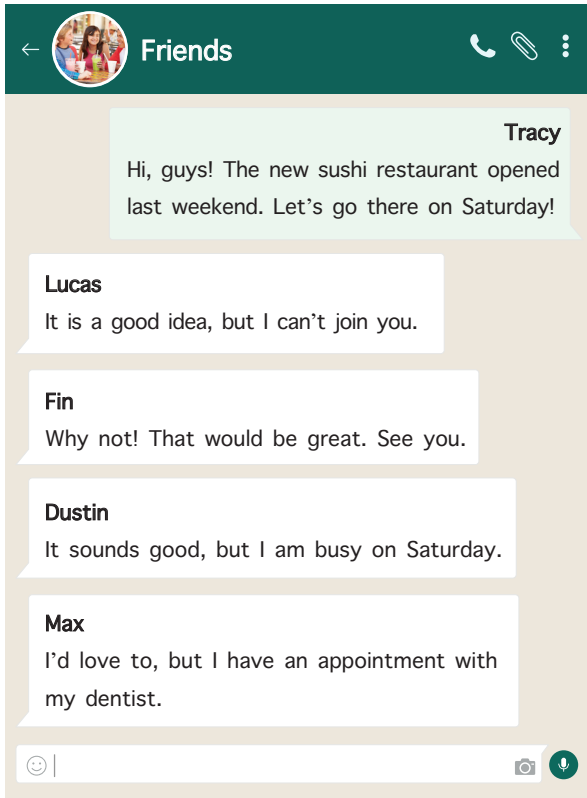
- First, melt the yeast in warm water in a large bowl.
- Second, add some flour, sugar, salt and olive oil into the bowl.
- Then, knead the dough and make it into a ball.
- After that, cover it and make it rest in a warm place.
- Later, add the olives on the top of it and put the dough on a baking tray.
- Finally, bake it about 25 minutes in a preheated oven. Enjoy it!



What is the next step after adding the ingredients into the bowl?

- A) Melting the yeast in warm water. B) Adding the olives on the top of the dough.
C) Baking the bread about 25 minutes in the oven. D) Kneading the dough and making it into a ball.

2.



According to the conversation above, who refuses Tracy's invitation with NO excuse?

- A) Lucas B) Fin C) Dustin D) Max

3.

Sophie : ---- ?

Benneth : Yes, I have. I went to Türkiye last winter.

Sophie : ---- ?

Benneth : It was very cold and snowy.

Sophie : ---- ?

Benneth : I went on a sightseeing tour in Bursa and tried skiing in Uludağ. It was incredible.



Which of the following questions does Sophie NOT ask Benneth?

- A) What did you do there
B) Have you ever been abroad
C) Did you taste any local dishes
D) How was the weather

4.

Tansu, do you think there will be water shortages in the future?

Yes, I think so. There won't be enough water.

What precautions should we take against it?

I think we must stop wasting and polluting water sources. Scientists should educate people to use less water and take the attention on global warming.

Tansu

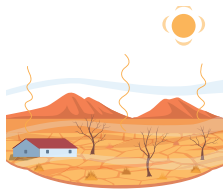
Serhat

What are Serhat and Tansu talking about?

A)



B)



C)



D)



5.

Hi. This is Gwen White. Can I talk to Mr. Black?

I'm afraid, Mr. Black is not available at the moment. He has gone out.

OK. Could you tell him to meet up at the Sun Café at 3 p.m. tomorrow?

---? I couldn't hear you.

Sure. Can you say that we'll meet up at the Sun Café at 3 p.m. tomorrow?

Of course.

Gwen

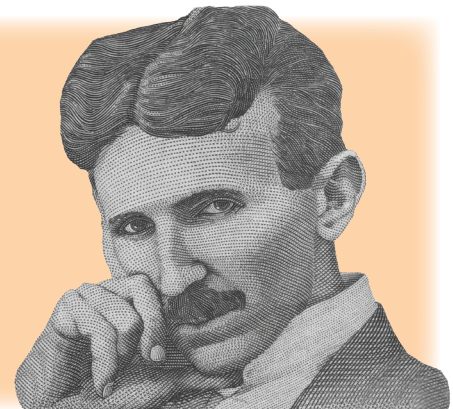
Secretary

Which of the following completes the phone conversation above?

- A) Would you like to leave a message
- B) Could you repeat what you say
- C) Could you hold on a moment
- D) Can I have your number

6.

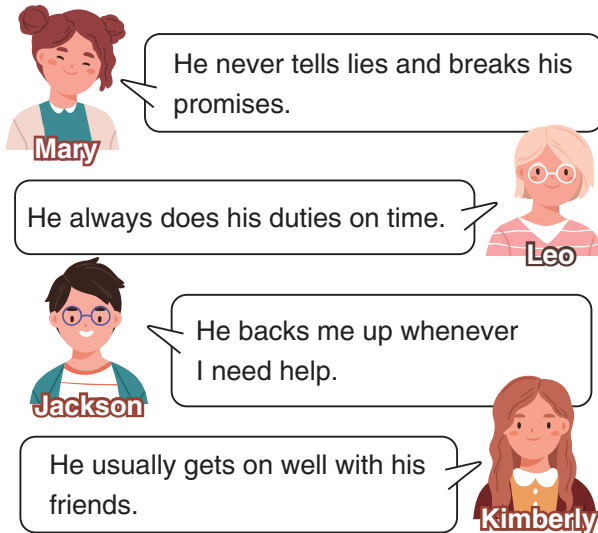
Nikola Tesla was a Serbian-American engineer and inventor. He was born in Smiljan, Croatia. At the Polytechnic school, he began his studies in mechanical and electrical engineering. He worked for a short time for Thomas Edison in New York City before he started his own company. With the help of financial support and his genius ideas, Tesla built laboratories and companies in New York to develop a range of electrical and mechanical devices. He is famous for the design of the modern electricity system.



Which of the following questions does NOT have an answer in the text above?

- A) What did Tesla do in New York?
- B) Where did Tesla work?
- C) When was Tesla born?
- D) What is Tesla famous for?

7. Mary, Leo, Jackson and Kimberly are talking about their friend, Steve.



According to the speech bubbles above, which one is NOT correct about Steve?

- A) He is reliable. B) He is supportive.
C) He is punctual. D) He is laid-back.

8. Mrs. Simpson lets her children do some chores at home. She draws some chores on a poster every week. You can see this week's responsibilities on the poster below.

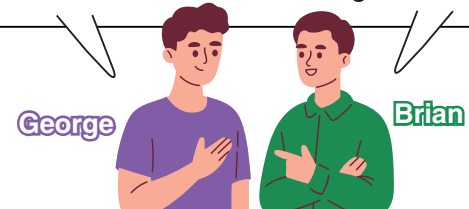


Which of the following tools do NOT the children need to do chores?

- A) mop B) vacuum cleaner
C) dishwasher D) washing machine

9.

- George** : Have you ever done an extreme sport?
Brian : Yes, I have. I've tried a few sports.
George : Really? Which ones?
Brian : I've tried hang-gliding and scuba diving.
George : Can you describe your experiences?
Brian : I really enjoyed floating in the air like a bird and meeting with the sea creatures. What about you? Are you an extreme sports lover?
George : Yes I am. I want to try fighting with the rough waves this summer.
Brian : Oh, that's fascinating.



Which of the following is NOT mentioned in the conversation above?



10. Ginny wants to create a password for her social networking site account. She finds some rules on the Net to create a strong password:

Rules for Creating a Strong Password

1. Use at least nine characters.
2. Do not use personal information like names and birth dates.
3. Do not use ordered numbers.
4. Include at least one symbol. (!, @, #, +, etc.)

Which of the following is an appropriate password for Ginny?

- A) 1234567#! B) run201#+!
C) Ginny@2012 D) dfgh+492